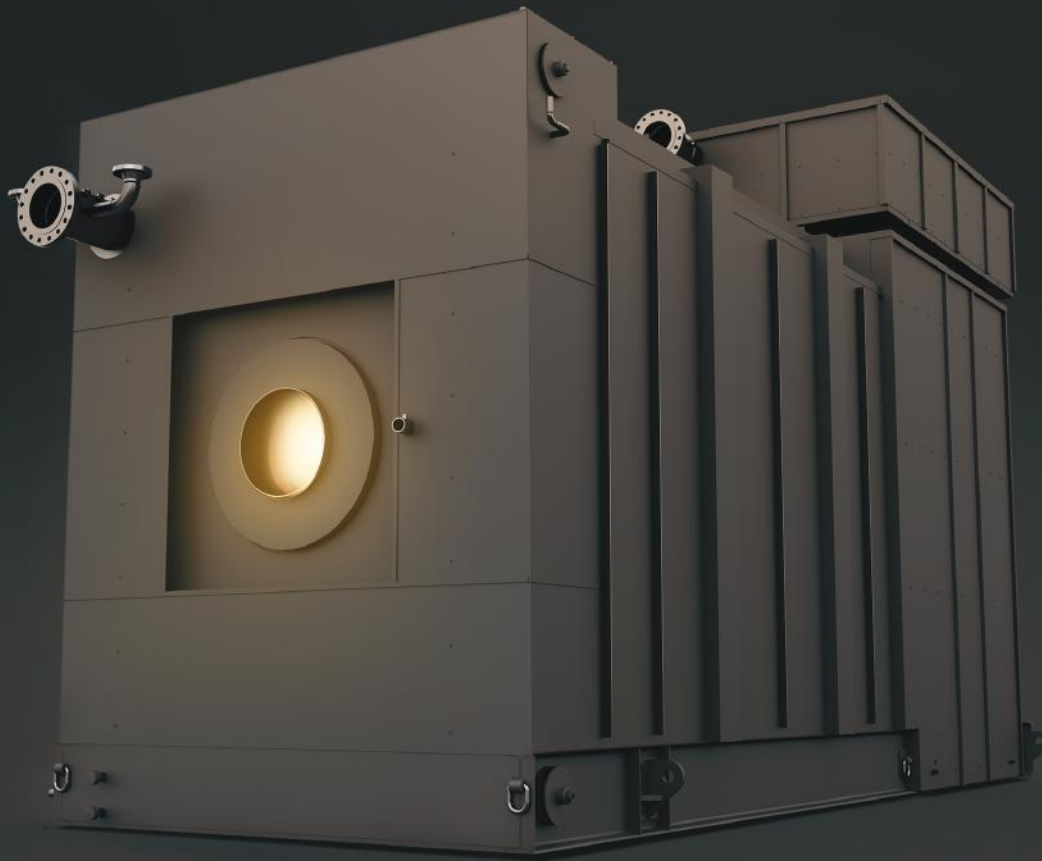


# WARDEN

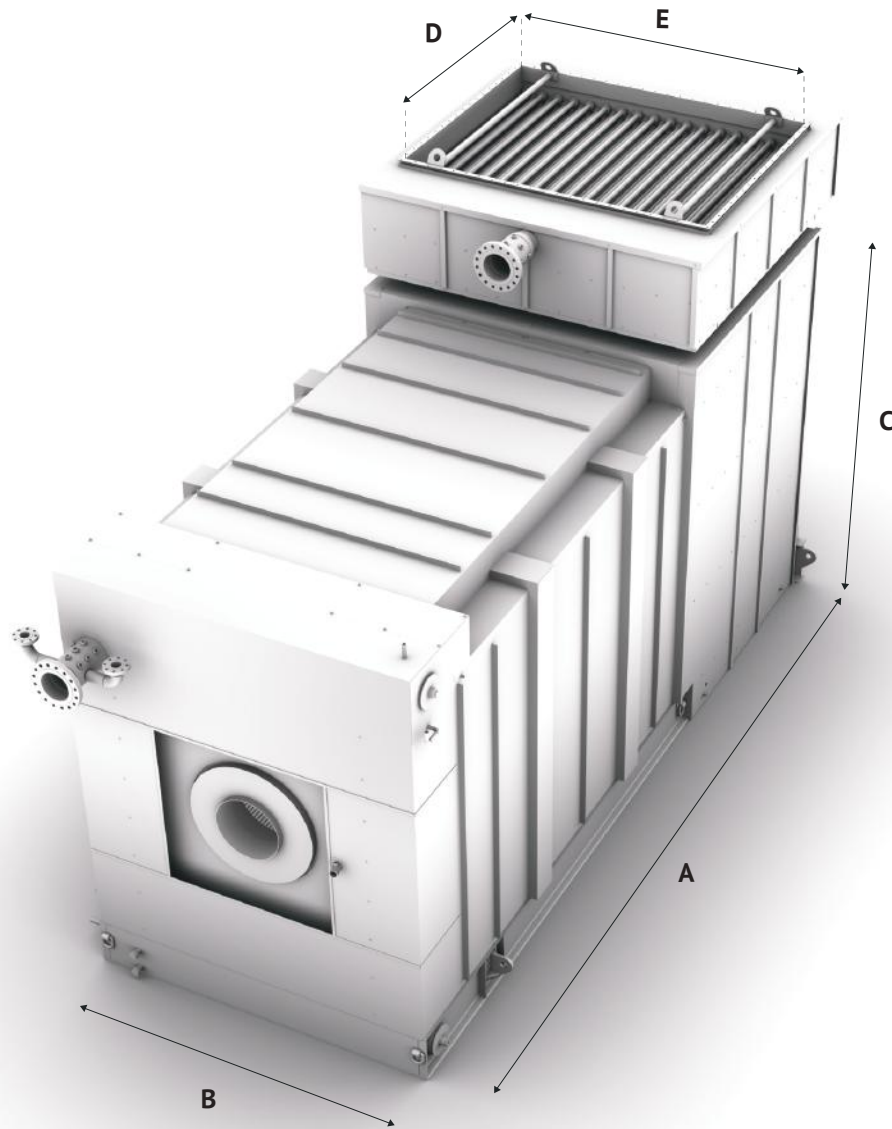
HIGH TEMPERATURE HOT WATER GENERATOR  
FROM 50 TO 150 MMBTU/HR



© Groupe Simoneau Inc. 2016. All rights reserved.

**REQUEST INFORMATION**  
T : 1 800 748 3783 / 450-641-9140  
[WWW.GROUPESIMONEAU.COM](http://WWW.GROUPESIMONEAU.COM)

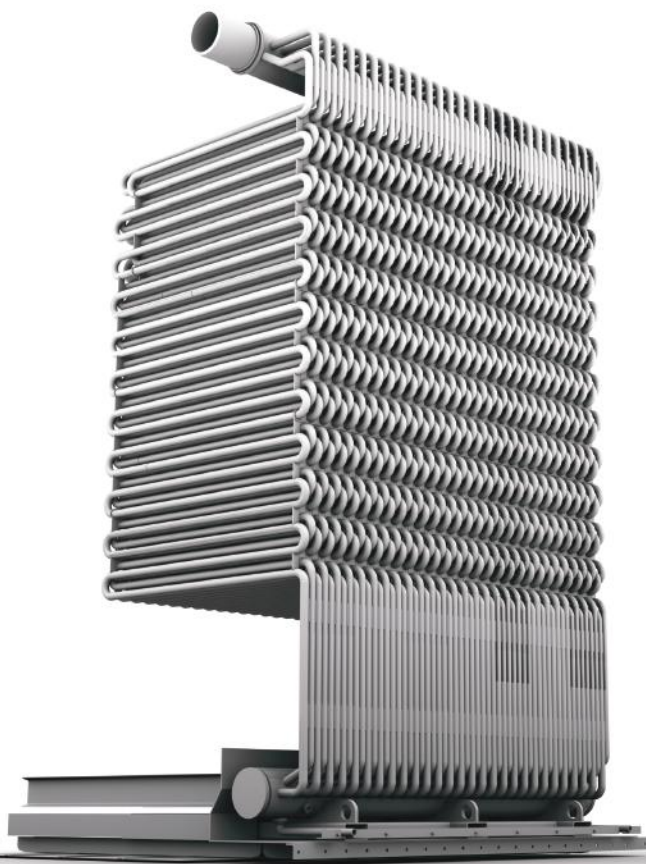
# PHYSICAL DATA SHEET



Boiler Model Number	Capacity MMBTU/Hr	A Length (in.)	B Width (in.)	C Height (in.)	D x E Gas Outlet (in.)	WEIGHTS (in Pounds)	
						Dry	Flooded
HTHWG-50	50	316,5	110,5	142,5	85 x 96	60 750	70 750
HTHWG-75	75	331	127,5	163,5	88 x 112	78 000	89 750
HTHWG-100	100	375,5	140,25	185,5	72 x 124	113 000	128 750
HTHWG-125	125	406	140,25	185,5	82 x 124	122 250	139 750
HTHWG-150	150	426,5	140,25	185,5	92 x 124	128 500	147 250

# YOUR DISTRICT HEATER, THAT PUTS YOUR MIND AND YOUR OCCUPANTS AT EASE

Introducing WARDEN, a high temperature watertube generator engineered to meet the needs of hospitals, universities and large industrial facilities. With a capacity ranging from 50 to 150 MM Btu/hr, WARDEN is a reliable source of energy that will put your mind and your occupants at ease.



## ADVANTAGES

- Patent pending design
- Complete water cooling at front wall and convection side walls
- Minimal thermal NOx emissions
- Follows EPA regulations
- No refractory except at the burner throat
- Convection made of two "slide-out" retractable modules
- Staggered tube arrangement
- Optimized heat transfer
- Prevents steaming
- Adequate pressure drop on the water side
- 0.105 inch tube thickness
- Épaisseur des tubes de 0,105 pouces
- Finned tube convection section designed to improve efficiency by 2-3%
- High quality thick insulation to reduce radiation losses
- Gas tight heavy duty inner casing tested at 10 inches of H2O

## COMBUSTION / CONTROL

**LARGE SELECTION OF  
ADAPTABLE COMBUSTION  
SYSTEMS**

**SCADA AVAILABLE  
WITH TOUCHPANELS AND  
INTEGRATED PLC**

**COMPLIANT TO MOST  
STRINGENT EMISSIONS  
THROUGHOUT NORTH AMERICA**

**FLEXIBILITY OF CHOICE  
IN FUEL SELECTION**

**WARDEN HIGH TEMPERATURE HOT WATER BOILER NOW AVAILABLE**

Stay in the loop. Get product updates by visiting [www.groupe-simoneau.com](http://www.groupe-simoneau.com)



**SIMONEAU**

POWER TO GROW