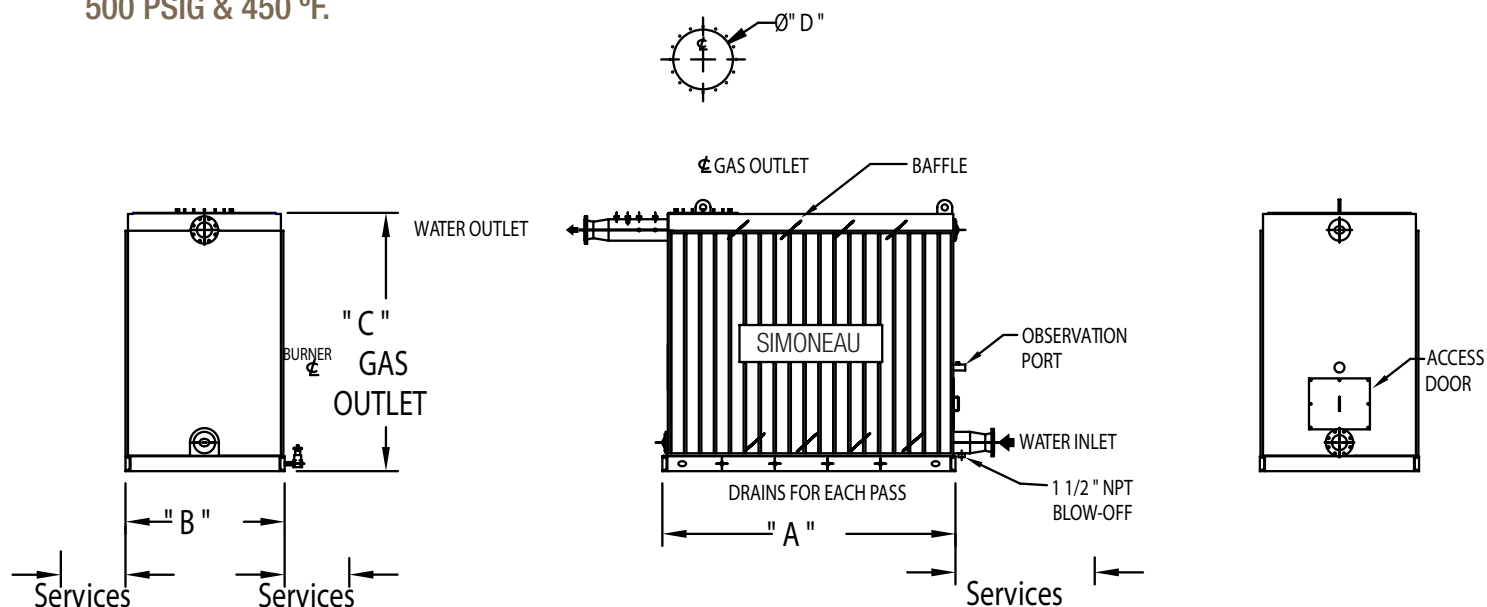


Physical data sheet

HTHW Type High Temperature Hot Water Generator

1

High temperature Hot Water Generators are registered under ASME Code Section I for operation up to 500 PSIG & 450 °F.



Boiler Model Number	Capacity MMBTU / hr	A Length	B Width	C Height	D Gaz Outlet	WEIGHTS (in Pounds)	
						Dry	Flooded
HTHW-100	3,347	82 5/8"	54"	97 11/16"	12" dia.	7,200	8,250
HTHW-125	4,184	88 3/4"	54"	97 11/16"	16" dia.	7,750	9,000
HTHW-150	5,021	100 7/8"	54"	97 11/16"	16" dia.	8,750	10,000
HTHW-175	5,858	110"	54"	97 11/16"	18" dia.	9,250	10,750
HTHW-200	6,695	121 1/4"	54"	97 11/16"	18" dia.	10,250	12,000
HTHW-250	8,369	118"	64"	109 3/16"	20" dia.	12,250	14,500
HTHW-300	10,042	127 1/4"	64"	109 3/16"	20" dia.	13,250	15,500
HTHW-350	11,716	139"	64"	109 3/16"	20" dia.	14,250	16,750
HTHW-400	13,390	171 5/16"	78"	120 15/16"	24" dia.	17,250	20,500
HTHW-450	15,063	177 3/8"	78"	120 15/16"	24" dia.	18,000	21,250
HTHW-500	16,737	189 1/2"	78"	120 15/16"	24" dia.	19,250	23,000
HTHW-600	20,085	196 1/4"	90"	131 3/8"	30" dia.	23,500	28,250
HTHW-700	23,432	214 1/2"	90"	131 3/8"	32" dia.	25,750	31,250
HTHW-800	26,780	241 1/2"	90"	131 3/8"	32" dia.	28,040	29,750
HTHW-900	30,127	253 5/8"	90"	131 3/8"	32" dia.	29,750	36,000
HTHW-1000	33,475	202 1/2"	108"	144 1/4"	36" dia.	35,000	43,250
HTHW-1100	36,822	211 1/2"	108"	144 1/4"	36" dia.	36,500	45,000
HTHW-1200	40,170	220 5/8"	108"	144 1/4"	36" dia.	37,850	46,850
HTHW-1500	50,212	290 1/2"	128 1/2"	154"	36" dia.	40,900	51,400

Capacities up to 2000 HP available upon request. All dimensions are imperial.

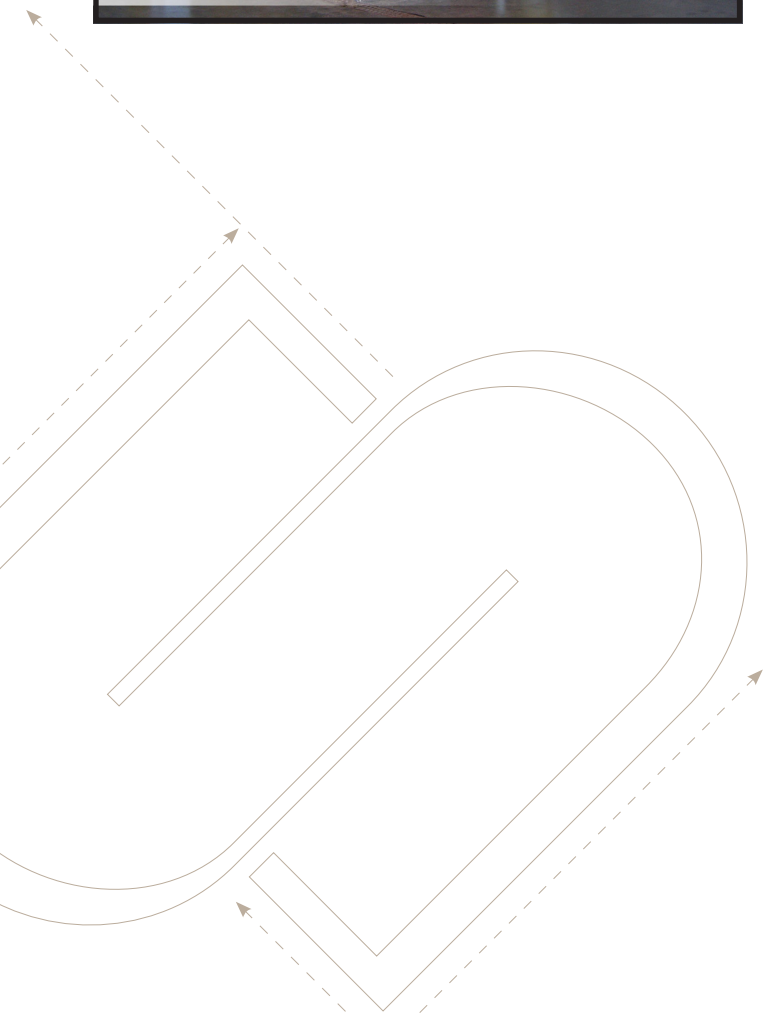
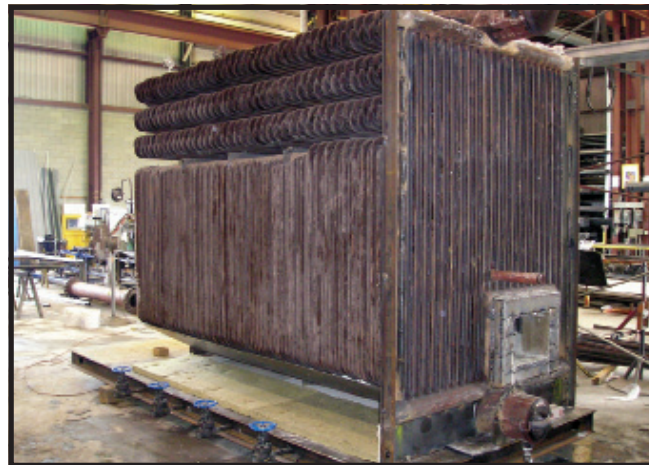
DS-HTHW-1_211210

Physical data sheet

HTHW Type High Temperature Hot Water Generator

2

Typical High Temperature Hot Water Generator



DS-HTHW-2_211210