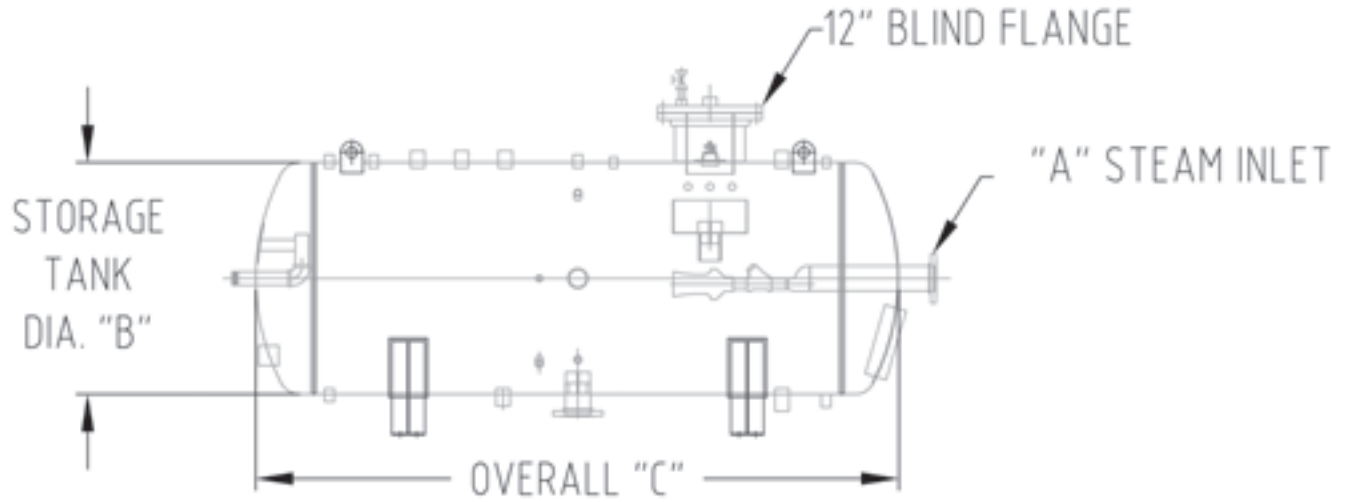


Physical data sheet

Deaerator up to 25 000 PPH / Deaerator

1



Up to 25 000 PPH

Percentage of condensate: 50%
 Condensate temperature: 160 °F
 Make up water temperature: 40 °F
 Storage capacity: 10 minutes

This information is subject to changes without notice

DEAERATOR CAPACITY (PPH)		5 000	10 000	15 000	20 000	25 000
MODEL		DG-5	DG-10	DG-15	DG-20	DG-25
STEAM INLET	A	3"	4"	5"	6"	6"
STORAGE TANK DIA.	B	30"	36"	42"	42"	42"
STORAGE TANK LENGTH	C	73.375"	90"	94.375"	122.375"	150.375"

Physical data sheet

Deaerator up to 25 000 PPH / Deaerator

2

Typical Deaerator 18 000 PPH Spray type

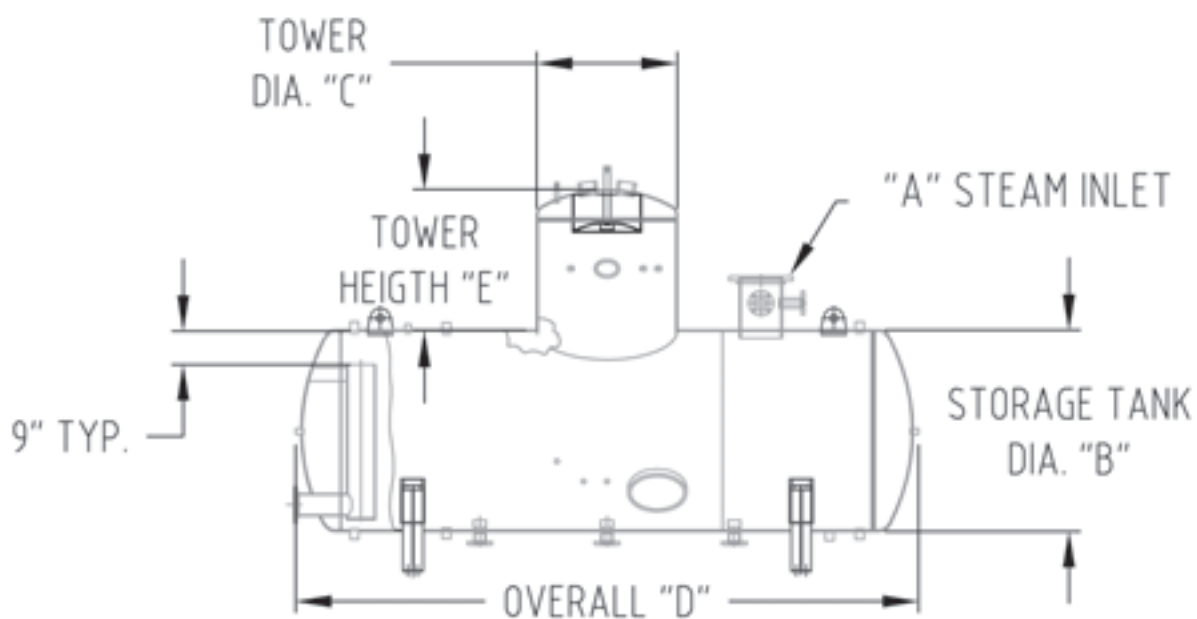


DS_D25-2_030211

Physical data sheet

Deaerator from 30 000 to 175 000 PPH / Deaerator

1



From 30 000 to 175 000 PPH

Percentage of condensate: 50%
 Condensate temperature: 160 °F
 Make up water temperature: 40 °F
 Storage capacity: 10 minutes

This information is subject to changes without notice

DEAERATOR CAPACITY (PPH)		30 000	50 000	60 000	70 000	80 000
MODEL:		DG-30	DG-50	DG-60	DG-70	DG-80
STEAM INLETA	A	4" x 8"	6" x 12"	6" x 12"	7" x 14"	7" x 14"
STORAGE TANK DIA.	B	48"	60"	60"	66"	72"
TOWER OUTSIDE DIA.	C	30"	36"	36"	36"	42"
STORAGE TANK LENGTH	D	114"	145"	141"	135.5"	130"
TOWER HEIGHT	E	30.625"	30.625"	36.5"	36.5"	39.625"
DEAERATOR MODEL: / DG (PPH)		90 000	100 000	125 000	150 000	175 000
MODEL:		DG-90	DG-100	DG-125	DG-150	DG-175
STEAM INLET	A	8" x 16"	8" x 16"	9" x 18"	10" x 20"	11" x 22"
STORAGE TANK DIA.	B	72"	72"	78"	84"	96"
TOWER OUTSIDE DIA.	C	42"	42"	48"	54"	60"
STORAGE TANK LENGTH	D	145"	159"	168.375"	173"	155.125"
TOWER HEIGHT	E	39.625"	39.625"	42.5"	48.5"	51.5"

DS-D30-1_030211

Physical data sheet

Deaerator from 30 000 to 175 000 PPH / Deaerator

2

Typical Deaerator

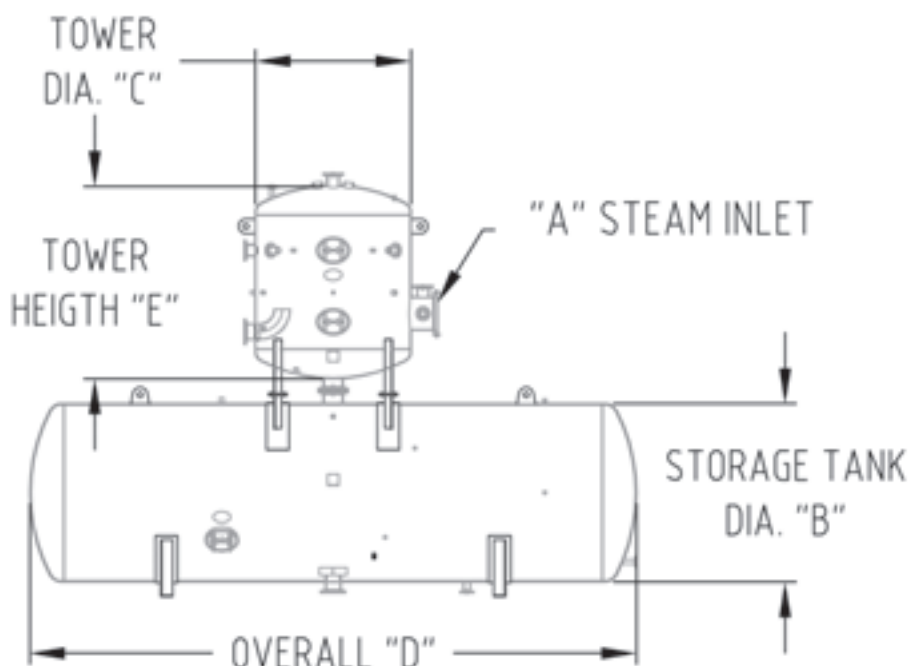


DS-D30-2_030211

Physical data sheet

Deaerator from 200 000 to 350 000 PPH / Deaerator

1



From 200 000 to 350 000 PPH

Percentage of condensate: 50%
 Condensate temperature: 180 °F
 Make up water temperature: 50 °F
 Storage capacity: 10 minutes

This information is subject to changes without notice

DEAERATOR CAPACITY (PPH)		200 000	250 000	300 000	350 000
MODEL:		DG-200	DG-250	DG-300	DG-350
STEAM INLETA	A	18"	20"	22"	24"
STORAGE TANK DIA.	B	84"	102"	108"	114"
TOWER OUTSIDE DIA.	C	66"	78"	84"	84"
STORAGE TANK LENGTH	D	175.125"	160.625"	172.25"	180.75"
TOWER HEIGHT	E	74.5"	89.375"	100"	101"

Greater designs available upon request

Physical data sheet

Deaerator from 200 000 to 350 000 PPH / Deaerator

2



DS-0200-2_030211